

# H765



## KNURLED HOLLOW HANDWHEEL WITH THREADED THROUGH-HOLE INSERT

### Materials:

Reinforced polyamide.  
Resistant to oils and greases.

### Surface finish:

Satin.

### Colour:

Black (RAL 9011).

### Inserts:

#### H765:

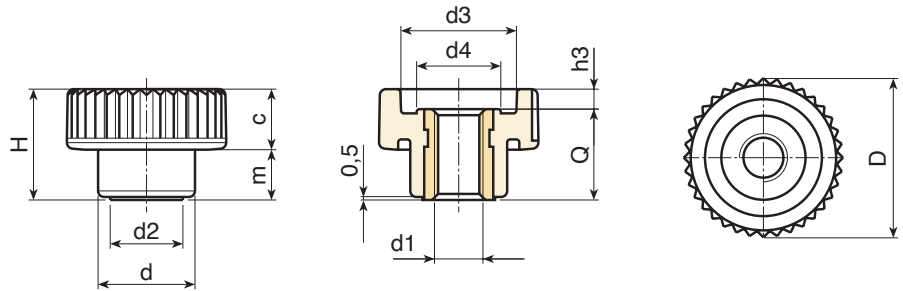
Brass insert with threaded through hole (thread tolerance 6H).

#### H765PIN:

Stainless steel insert with threaded through hole (Aisi 303) (thread tolerance 6H).

### Special Requests:

- Upon request and for special quantities available in the colours indicated in the chart [page].



### Version H765: brass insert.

Code	art.	D	H	d	m	c	d2	d3	d4	h3	d1 <sub>6H</sub>	Q	🔒
-	H18015.BM0501	15	10.5	10	4.5	6	8	10	7.5	2	M4	8.5	2
-	H18015.BM0501	15	10.5	10	4.5	6	8	10	7.5	2	M5	8.5	2
-	H18015.BM0501	21	15	13	6.5	8.5	9.5	15	10.5	2.5	M5	12.5	5
-	H18015.BM0501	21	15	13	6.5	8.5	9.5	15	10.5	2.5	M6	12.5	5
-	H18015.BM0501	26	18	16	8.5	9.5	12	19	13	3	M6	15	10
-	H18015.BM0501	26	18	16	8.5	9.5	12	19	13	3	M8	15	10
-	H18015.BM0501	32	23	20	10.5	12.5	15	23	16	5	M8	18	16
-	H18015.BM0501	32	23	20	10.5	12.5	15	23	16	5	M10	18	16
-	H18015.BM0501	40	28	25	12.5	15.5	18	28	21	6	M8	22	31
-	H18015.BM0501	40	28	25	12.5	15.5	18	28	21	6	M10	22	32
-	H18015.BM0501	40	28	25	12.5	15.5	18	28	21	6	M12	22	32
-	H18015.BM0501	40	28	25	12.5	15.5	18	28	21	6	M14	22	34

### Version H765PIN: stainless steel insert Aisi 303.



Code	art.	D	H	d	m	c	d2	d3	d4	h3	d1 <sub>6H</sub>	Q	🔒
-	H18015.BM0501	15	10.5	10	4.5	6	8	10	7.5	2	M4	8.5	3
-	H18015.BM0501	15	10.5	10	4.5	6	8	10	7.5	2	M5	8.5	3
-	H18015.BM0501	21	15	13	6.5	8.5	9.5	15	10.5	2.5	M5	12.5	6
-	H18015.BM0501	21	15	13	6.5	8.5	9.5	15	10.5	2.5	M6	12.5	6
-	H18015.BM0501	26	18	16	8.5	9.5	12	19	13	3	M6	15	11.5
-	H18015.BM0501	26	18	16	8.5	9.5	12	19	13	3	M8	15	11.5
-	H18015.BM0501	32	23	20	10.5	12.5	15	23	16	5	M8	18	18
-	H18015.BM0501	32	23	20	10.5	12.5	15	23	16	5	M10	18	18
-	H18015.BM0501	40	28	25	12.5	15.5	18	28	21	6	M8	22	32
-	H18015.BM0501	40	28	25	12.5	15.5	18	28	21	6	M10	22	31
-	H18015.BM0501	40	28	25	12.5	15.5	18	28	21	6	M12	22	34