

F188



SOLID STAR HANDWHEEL WITH THREADED THROUGH-HOLE INSERT

Materials:

Reinforced polyamide.
Resistant to oils and greases.

Surface finish:

Satin.

Colour:

Black (RAL 9011).

Inserts:

Version F188:

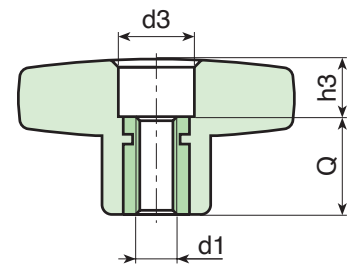
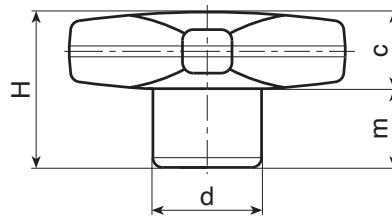
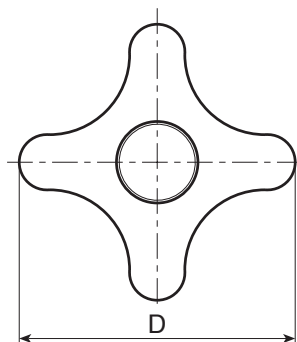
Brass insert with threaded through hole (thread tolerance 6H).

Version F188PIN:

Stainless steel insert with threaded through hole (Aisi 303) (thread tolerance 6H).

Special Requests:

- Upon request and for special quantities inserts can be supplied in different materials.
- Upon request and for special quantities available in the colours indicated in the chart (attention: reduced range) [page].



Version F188: with brass insert.

| Code | Art. | D | H | d | c | m | d3 | h3 | d1 _{6H} | Q | g |
|------|---------------|----|------|----|------|------|----|-----|------------------|----|------|
| - | F18832.TM0401 | 32 | 23 | 15 | 11 | 11 | 10 | 5 | M4 | 18 | 9 |
| - | F18832.TM0501 | 32 | 23 | 15 | 11 | 11 | 10 | 5 | M5 | 18 | 10 |
| - | F18832.TM0601 | 32 | 23 | 15 | 11 | 11 | 10 | 5 | M6 | 18 | 10.5 |
| - | F18832.TM0801 | 32 | 23 | 15 | 11 | 11 | 10 | 5 | M8 | 18 | 11 |
| - | F18840.TM0601 | 40 | 24.5 | 16 | 12 | 12.5 | 12 | 6.5 | M6 | 18 | 13 |
| - | F18840.TM0801 | 40 | 24.5 | 16 | 12 | 12.5 | 12 | 6.5 | M8 | 18 | 15 |
| - | F18840.TM1001 | 40 | 24.5 | 16 | 12 | 12.5 | 12 | 6.5 | M10 | 18 | 16 |
| - | F18850.TM0601 | 50 | 29 | 20 | 14 | 15 | 14 | 11 | M6 | 18 | 23 |
| - | F18850.TM0801 | 50 | 29 | 20 | 14 | 15 | 14 | 11 | M8 | 18 | 24 |
| - | F18850.TM1001 | 50 | 29 | 20 | 14 | 15 | 14 | 11 | M10 | 18 | 25 |
| - | F18850.TM1201 | 50 | 29 | 20 | 14 | 15 | 14 | 11 | M12 | 18 | 26 |
| - | F18860.TM0801 | 60 | 34 | 24 | 15.5 | 18.5 | 16 | 16 | M8 | 18 | 34 |
| - | F18860.TM1001 | 60 | 34 | 24 | 15.5 | 18.5 | 16 | 16 | M10 | 18 | 38 |
| - | F18860.TM1201 | 60 | 34 | 24 | 15.5 | 18.5 | 16 | 16 | M12 | 18 | 40 |
| - | F18860.TM1401 | 60 | 34 | 24 | 15.5 | 18.5 | 16 | 16 | M14 | 18 | 45 |

Version F188PIN: with stainless steel insert (Aisi 303).



| Code | Art. | D | H | d | c | m | d3 | h3 | d1 _{6H} | Q | g |
|------|------------------|----|------|----|------|------|----|-----|------------------|----|------|
| - | F18832.TM0501PIN | 32 | 23 | 15 | 11 | 11 | 10 | 5 | M5 | 18 | 10 |
| - | F18832.TM0601PIN | 32 | 23 | 15 | 11 | 11 | 10 | 5 | M6 | 18 | 10.5 |
| - | F18832.TM0801PIN | 32 | 23 | 15 | 11 | 11 | 10 | 5 | M8 | 18 | 11 |
| - | F18840.TM0601PIN | 40 | 24.5 | 16 | 12 | 12.5 | 12 | 6.5 | M6 | 18 | 13 |
| - | F18840.TM0801PIN | 40 | 24.5 | 16 | 12 | 12.5 | 12 | 6.5 | M8 | 18 | 15 |
| - | F18840.TM1001PIN | 40 | 24.5 | 16 | 12 | 12.5 | 12 | 6.5 | M10 | 18 | 16 |
| - | F18850.TM0801PIN | 50 | 29 | 20 | 14 | 15 | 14 | 11 | M8 | 18 | 24 |
| - | F18850.TM1001PIN | 50 | 29 | 20 | 14 | 15 | 14 | 11 | M10 | 18 | 25 |
| - | F18850.TM1201PIN | 50 | 29 | 20 | 14 | 15 | 14 | 11 | M12 | 18 | 26 |
| - | F18860.TM0801PIN | 60 | 34 | 24 | 15.5 | 18.5 | 16 | 16 | M8 | 18 | 34 |
| - | F18860.TM1001PIN | 60 | 34 | 24 | 15.5 | 18.5 | 16 | 16 | M10 | 18 | 38 |
| - | F18860.TM1201PIN | 60 | 34 | 24 | 15.5 | 18.5 | 16 | 16 | M12 | 18 | 40 |